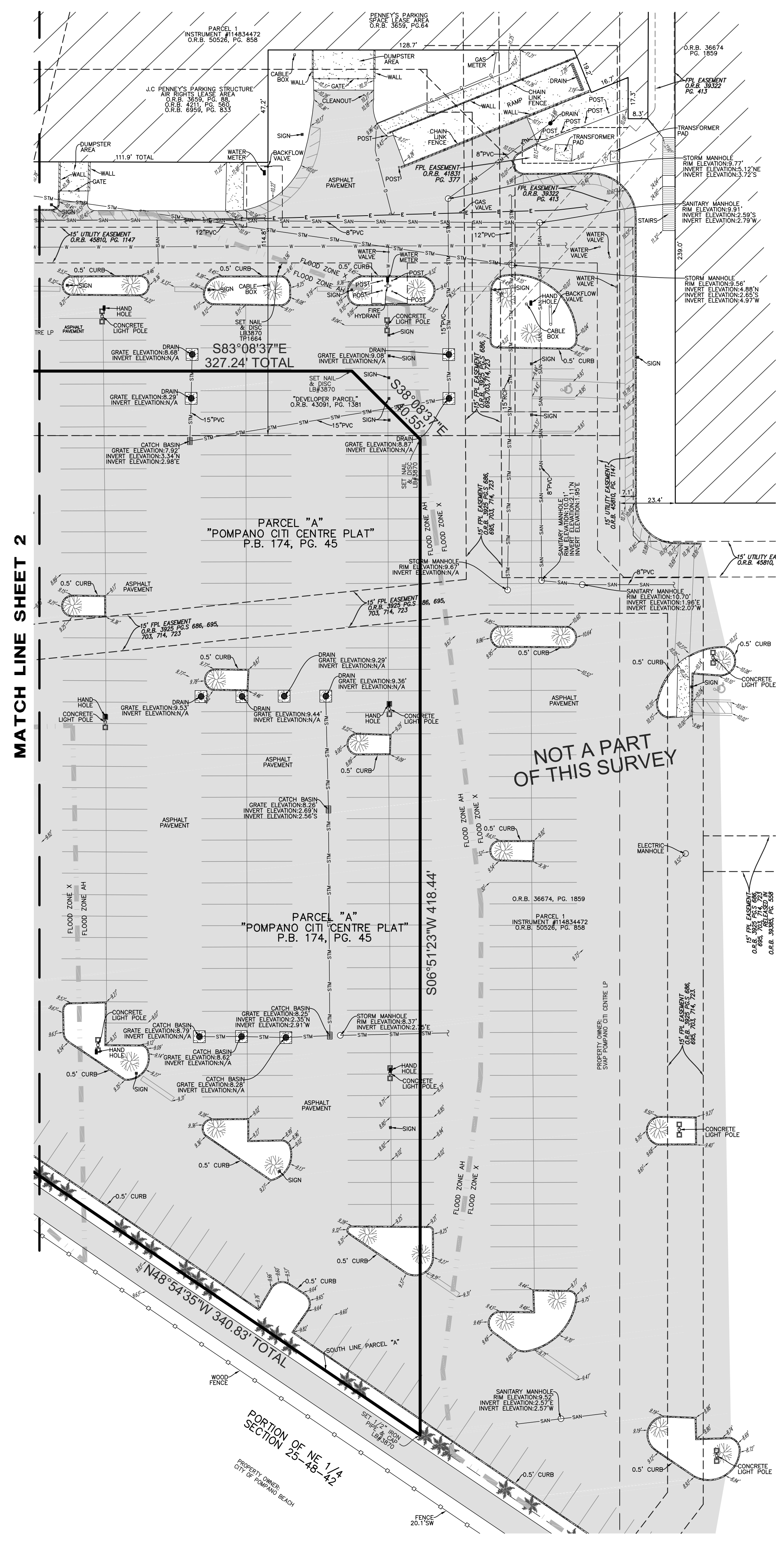


- LEGEND
- CONCRETE
 - ASPHALT PAVEMENT
 - PAVERS
 - ELEVATION
 - OVERHEAD WIRES
 - UNDERGROUND STORM SEWER LINE
 - UNDERGROUND SANITARY SEWER LINE
 - UNDERGROUND WATER LINE
 - UNDERGROUND ELECTRIC LINE
 - UNDERGROUND GAS LINE
 - UNDERGROUND TELEPHONE LINE
 - NON-VEHICULAR ACCESS LINE
 - REINFORCED CONCRETE PIPE
 - CORRUGATED METAL PIPE
 - POLYVINYLCHLORIDE PIPE
 - CENTERLINE
 - OFFICIAL RECORDS BOOK
 - PLAT BOOK
 - PAGE
 - TRAVERSE POINT (FOR FIELD INFORMATION ONLY)
 - RADIUS
 - CENTRAL ANGLE
 - ARC LENGTH
 - FLORIDA POWER & LIGHT COMPANY
 - LICENSED BUSINESS
 - PALM TREE
 - OAK TREE
 - CYPRESS TREE
 - UNIDENTIFIED TREE

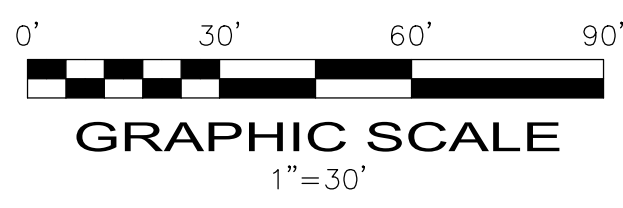


John F Pulice

Digitally signed
by John F Pulice
Date: 2021.12.16
12:32:56 -05'00'

COPYRIGHT 2020 BY PULICE LAND SURVEYORS, INC. ALL RIGHTS RESERVED. NO PART OF THIS SURVEY MAY BE REPRODUCED, IN ANY FORM OR BY ANY MEANS, WITHOUT PERMISSION IN WRITING FROM AN OFFICER OF PULICE LAND SURVEYORS, INC.

SHEET 4 OF 4
THIS DOCUMENT IS NEITHER FULL NOR COMPLETE WITHOUT SHEETS 1 THROUGH 4 INCLUSIVE



DEVELOPMENT PARCEL POMPAÑO CITY CENTER 1400 NE 23RD STREET POMPAÑO BEACH, BROWARD COUNTY FLORIDA 33062		
TOPOGRAPHIC SURVEY ALTA/NSPS LAND TITLE SURVEY		
	PULICE LAND SURVEYORS, INC. 5381 NOB HILL ROAD SUNRISE, FLORIDA 33351 TELEPHONE: (954) 572-1777 FAX: (954) 572-1778 E-MAIL: info@puliceandsurveyors.com WEBSITE: www.puliceandsurveyors.com CERTIFICATE OF AUTHORIZATION LB#38	
	DRAWN BY: B.E.	FILE: MORRIS GROUP DEVELOPMENT, LLC
	CHECKED BY: J.F.P.	SURVEY DATE: 1/30/20
	ORDER NO.: 654	

PZ21-13000008
2/2/2022